

MEETING MINUTES

Groundwater Sustainability Agency for the Central Management Area in the Santa Ynez River Groundwater Basin August 24, 2020

A regular meeting of the Groundwater Sustainability Agency (GSA) for the Central Management Area (CMA) in the Santa Ynez River Groundwater Basin was held on Monday, 24 August 2020. As a result of the COVID-19 emergency and Governor Newsom's Executive Orders to protect public health by issuing shelter-in-home standards, limiting public gatherings, and requiring social distancing, this meeting occurred solely via teleconference as authorized by and in furtherance of Executive Order Nos. N-29-20 and N-33-20.

GSA Committee Directors Present: Ed Andrisek, Art Hibbits

Alternate GSA Committee Director Present: Cynthia Allen

Staff Present: Bill Buelow, Rose Hess, Amber Thompson, Kevin Walsh, Matt Young

Others Present: Brian Bondy, Zoe Carlson (Dudek), Maygan Cline (GeoSyntec), Larry Lahr, Debbie Larango, Curtis Lawler (Stetson Engineers), Miles McCammon (Stetson Engineers), Jeff Newton, Tim Nicely (GSI), Mark Preston

I. Call to Order

GSA Committee Director Andrisek called the meeting to order at 10:05 a.m., welcomed all in attendance and asked Mr. Buelow to do roll call. A quorum was met.

II. Introductions and Review of SGMA in Santa Ynez River Valley Basin

Mr. Buelow announced names of all phone attendees.

Mr. Buelow reviewed history of the Sustainable Groundwater Management Act (SGMA) requirements and what has been completed so far in the Santa Ynez River Basin including the creation of the three Groundwater Sustainability Agencies (GSAs) in the Basin (EMA, CMA, WMA), securing Department of Water Resources (DWR) Prop. 1 Grant (Grant) funding, hiring Consultants, coordinating efforts between the eight agencies participating in the three GSAs, and establishing a Citizen Advisory Group (CAG) in each of the Management Areas of the Basin.

III. Additions or Deletions to the Agenda

No additions or deletions were made.

IV. Public Comment

Mr. Jeff Newton, CMA Citizen Advisory Group (CAG) member, announced that the Santa Ynez Water Group was formed to encourage farmers and the agriculture community to be involved in the SGMA efforts.

Mr. Bill Buelow introduced correspondence received from the Santa Ynez Water Group referred to under Item XI of the agenda. The group is currently comprised of over 47 landowners representing over 4,000 acres located in all three management areas of the Basin. Discussion followed.

V. Review and Approve Minutes

Mr. Bill Buelow submitted the minutes of the meeting of May 18, 2020 for GSA Committee approval.

GSA Committee Director Hibbits made a MOTION to approve the minutes. GSA Committee Director Andrisek seconded the motion and it passed unanimously by Roll Call vote.

VI. Receive CMA GSA Financial Update and Consider approval of CMA Warrant List

Mr. Buelow presented the financial reports of FY 2019-20 Periods 10 through 12 (through June 30, 2020) and the Warrant Lists for April, May, June and July 2020 for GSA Committee review. There were no comments.

The GSA Committee unanimously approved the April, May, June and July 2020 Warrant Lists as presented (Nos. 1013 – 1019) totaling \$91,718.87. GSA Committee Director Hibbits made a MOTION to approve the warrant lists and financial reports as submitted. GSA Committee Director Andrisek seconded the motion and it passed unanimously by Roll Call vote.

VII. Receive Update and Memo from CMA Citizen Advisory Group

Mr. Mark Preston presented a Memorandum dated August 24, 2020 and gave an update on the CMA Citizen Advisory Group (CAG) activities. The CMA CAG met June 4, 2020 and June 18, 2020 via teleconference to review the Draft SGMA Newsletter, the Draft Technical Memorandum (TM) for Regional Geology and 3D Geologic Model for the Santa Ynez River Valley Groundwater Basin and the Draft Phase 1 TM for Data Compilation for the Santa Ynez River Groundwater Basin Data Management System (WMA and CMA). The CMA CAG provided comments on all three documents to staff and consultants for consideration in the final versions.

Mr. Buelow announced that Ms. Jeanette Lombardo resigned from the CMA CAG as she took a position with the EPA at UC Davis. He thanked her for her service and asked CMA GSA Committee Members for recommendations and direction to staff for finding a suitable replacement. GSA Committee Member Andrisek recommended posting the application opening and create a committee to review submitted applications and select appointee.

Discussion followed.

VIII. Receive Staff Memo and Overview on Adjustments to Management Area Boundaries

Mr. Buelow presented a Memorandum dated August 2020 regarding Management Area Boundary Modifications. He explained the slight shift in internal boundaries.

The CMA-EMA proposed internal boundary change was based on a request from the City of Solvang and a further analysis of parcel boundaries and hydrogeologic information. The revised boundary does not split any parcels and follows a topographic and geologic break at the base of Skytt Mesa.

The proposed change to the CMA-WMA boundary is based on an analysis of the hydrologic and hydrogeologic data by Stetson Engineers. It aligns the Management Area boundary with surface water drainage, the local topography and hydrogeology; encloses a large portion of the Careaga formation within the CMA, which aids in calculations for the water budget; aligns the boundary to the SYRWCD boundary in the Santa Rita and Buellton uplands; shortens the boundary between the WMA and CMA which will simplify water budget calculations; and moves the boundary at the Santa Ynez River nearer to a former USGS gauge location and a bedrock high. The new boundary is less arbitrary and will make the calculation of groundwater and surface water flux between the CMA and WMA easier to quantify.

He further clarified that all parcels included in these internal boundary changes were previously part of a GSA in this Basin. No additional land is subject to SGMA as a result of the changes therefore it is not considered a material change by DWR.

Discussion followed.

GSA Committee Director Hibbits made a MOTION to endorse the proposed boundary changes with the condition that landowners affected are notified. GSA Committee Director Andrisek seconded the motion and it passed unanimously by Roll Call vote.

IX. Receive Update on GSP activities in the CMA and Basin

Ms. Cline, Geosytec Consultants, along with Curtis Lawler and Miles McCammon, Stetson Engineers, and Zoe Carlson, Dudek, presented an update on the consultants GSP activities in the CMA GSA. The presentation included an update of consultant team activities since the last GSA Committee meeting in May 2020, a SGMA and GSA overview, GSP timeline and milestones and consultant team progress. The presentation also provided a review of the Draft Technical Memorandum of 3D Geologic Model for the Santa Ynez River Valley Groundwater Basin, community outreach and engagement, Draft Technical Memorandum of Data Compilation and Management, Hydrogeologic Conceptual Model, Water Budget, Groundwater Conditions and Groundwater Model. The consultants reviewed newly initiated work, ongoing activities and the next steps to create a SGMA compliant GSP for the CMA GSA.

There was public comment, GSA Committee Member, consultant and staff discussion following the presentation.

- Mr. Brian Bondy, Santa Ynez Water Group, expressed concern that the number of planned meetings seems too low particularly in 2021. Ms. Cline commented that the quarterly meetings shown in the presentation are the minimum and more would likely be planned as “Special Meetings”. GSA Committee Member Hibbits agreed that more meetings will be needed as more people become aware of the SGMA efforts and Technical Memos and GSP sections are being finalized. GSA Committee Member Andrisek requested staff to prepare Special Meeting proposed dates in addition to the Regular Quarterly Meetings for 2021.

X. Receive update on Aerial Electro-Magnetic Survey of CMA

Mr. Buelow announced Santa Ynez River Water Conservation District, on behalf of the CMA and WMA portions of the Basin, was awarded a \$296,000 grant with requirement of about \$100,000 to be spent by the CMA and WMA GSAs toward SkyTEM survey of the CMA and WMA. The project has been delayed due to COVID-19 travel restrictions as the crew is based out of Ontario, Canada. They are now allowed entry to the US and are beginning their work again. Staff is in communication with SkyTEM and are waiting for a firm date for operations. The survey will possibly occur in late September or October. Staff will proceed with public awareness campaigns including press releases, email blasts and physical mailer after the flight dates are confirmed. There was no public comment.

XI. Received Correspondence

Correspondence received from the Santa Ynez Water Group was introduced and discussed during Public Comment.

XII. Possible Special CMA GSA Meeting: Monday, October 12, 2020, 10:00 AM, location TBD

Mr. Buelow announced there may be a need for Special Meetings of the CMA GSA Committee Meeting to review the Technical Memoranda. The tentative dates are October 12 and/or October 19, exact date, time and location TBD. Due to COVID-19 restrictions, it may be held via teleconference call.

Mr. Bondy requested future meetings include a video link for the public in addition to the teleconference option. Discussion followed.

XIII. Next Regular CMA GSA Meeting: Monday, November 16, 2020, 10:00 AM, location TBD

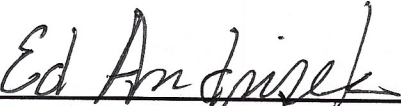
Mr. Buelow announced that the next CMA GSA Committee Meeting will be Monday, November 16, 2020, 10:00 AM, location TBD. Due to COVID-19 restrictions, it may be held via teleconference call.


XIV. CMA GSA Committee requests and comments

GSA Committee Directors Andrisek and Hibbits agreed with having Special Meetings tentatively on October 12 and/or October 19.

XV. Adjournment

GSA Committee Director Andrisek MOVED to adjourn the meeting at 11:52 a.m. GSA Committee Director Hibbits seconded the motion and it passed unanimously.


Ed Andrisek, Chairman


William J. Buelow, Secretary

**GROUNDWATER SUSTAINABILTY AGENCY FOR THE CENTRAL MANAGEMENT AREA (CMA)
IN THE SANTA YNEZ RIVER VALLEY GROUNDWATER BASIN**

APRIL 2020 WARRANT LIST FOR COMMITTEE APPROVAL

<u>NUMBER</u>	<u>DATE</u>	<u>PAYEE</u>	<u>DESCRIPTION</u>	<u>AMOUNT</u>
1013	04/08/20	Santa Ynez River Water Conservation District	1/3 of GSA Member Agency Account Tracking setup & GoDaddy "SantaYnezWater.org" 1 year domain	\$ 228.73
1014	04/08/20	Stetson Engineers	February 2020 Engineering Service (Task Order #2)	\$ 10,858.36
1015	04/08/20	Valley Bookkeeping	FY 2019-20 3rd Quarter Bookkeeping (Jan., Feb., March 2020)	\$ 150.00
MONTH TOTAL				\$ 11,237.09

MAY 2020 WARRANT LIST FOR COMMITTEE APPROVAL

<u>NUMBER</u>	<u>DATE</u>	<u>PAYEE</u>	<u>DESCRIPTION</u>	<u>AMOUNT</u>
1016	05/12/20	Stetson Engineers	March 2020 Engineering Service (Task Order #2)	\$ 41,334.93
MONTH TOTAL				\$ 41,334.93

JUNE 2020 WARRANT LIST FOR COMMITTEE APPROVAL

<u>NUMBER</u>	<u>DATE</u>	<u>PAYEE</u>	<u>DESCRIPTION</u>	<u>AMOUNT</u>
1017	06/15/20	Stetson Engineers	April 2020 Engineering Service (Task Order #2)	\$ 13,961.00
MONTH TOTAL				\$ 13,961.00

TOTAL THIS QUARTER: \$ 66,533.02

**GROUNDWATER SUSTAINABILITY AGENCY FOR THE CENTRAL MANAGEMENT AREA (CMA)
IN THE SANTA YNEZ RIVER VALLEY GROUNDWATER BASIN**

JULY 2020 WARRANT LIST FOR COMMITTEE APPROVAL

<u>NUMBER</u>	<u>DATE</u>	<u>PAYEE</u>	<u>DESCRIPTION</u>	<u>AMOUNT</u>
1018	07/13/20	Stetson Engineers	May 2020 Engineering Service (Task Order #2)	\$ 25,035.85
1019	07/13/20	Valley Bookkeeping	FY 2019-20 4th Quarter Bookkeeping (April, May, June 2020)	\$ 150.00
MONTH TOTAL * \$				25,185.85
				* FY 19-20

CENTRAL MANAGEENT AREA
CITIZEN ADVISORY GROUP
MEMORANDUM

DATE: August 24, 2020

TO: CMA GSA Committee

FROM: CMA Citizen Advisory Group
(representative Mark Preston)

SUBJECT: June Meetings to Discuss Newsletter and Two Technical Memoranda

Attendees

CMA CAG Members in attendance June 4, 2020: Sean Diggins, Jeanette Lombardo, Mark Preston, Jeff Newton, Larr Lahr, Sharyne Merritt

Consultants and Staff in attendance June 4, 2020: Bill Buelow (SYRWCD), Zoe Carlson (Dudek), Rose Hess (City of Buellton), Curtis Lawler (Stetson Engineers), Kevin Walsh (SYRWCD) and Matt Young (County of Santa Barbara)

CMA CAG Members in attendance June 18, 2020: Sean Diggins, Jeanette Lombardo, Mark Preston, Jeff Newton, Larr Lahr

Consultants and Staff in attendance June 18, 2020: Bill Buelow (SYRWCD), Maygan Cline (Geosyntec), Curtis Lawler (Stetson Engineers) and Matt Young (County of Santa Barbara)

Purpose

The CMA GSA Committee requested staff for the GSA agencies to coordinate meetings of the CMA CAG. Through a coordinated effort, the CAG held two meetings via teleconference due to the COVID-19 restrictions. The meetings were held on June 4, and June 18, 2020. The purpose of the meetings was for the CMA CAG (CAG) to review the Draft SGMA Newsletter, the Draft Technical Memorandum (TM) for Regional Geology and 3D Geologic Model for the Santa Ynez River Valley Groundwater Basin and the Draft Phase 1 TM for Data Compilation for the Santa Ynez River Groundwater Basin Data Management System (WMA and CMA). The Newsletter and the two TMs were prepared by the Stetson Engineer's team. A copy of the documents was made available to the CAG prior to the meeting at www.SantaYnezWater.org.

CAG Comments to the Newsletter:

- The CAG generally accepted the newsletter as proposed, with two comments
- Comment 1 was language inclusion, specifically Spanish
- Comment 2 was the inclusion of a contact phone number

Both comments were addressed in the final product as mailed.

CAG Comments on the Draft Data Compilation Technical Memorandum (June 4, 2020):

- CAG received the Technical Memorandum prepared by Stetson Engineers (Stetson).
- Jenette Lombardo commented on land-owner privacy with certain types of well data
- The CAG asked is the public can submit other known resources to the Library of Reports. Staff agreed this would be helpful and to coordinate with Bill Buelow.
- Jeannette Lombardo advised that the GSA needs to document everything, to substantiate conclusions and be transparent. Ms. Lombardo also questioned the techniques/methods/cost of the AEM survey.
- Jeff Newton commented that the water-level data needs to be reviewed to ensure that the data from individual aquifers are being evaluated together.
- Mark Preston requested a rewrite of Data Collection Goals #6 on page 2. The suggested rewrite was for clarity, not content. Goal 6 is the summarized purpose of the four-year journey. Consultants agreed to review the language and revise for clarity.

CAG Comments on the Draft Regional Geology Technical Memorandum (June 18, 2020):

- Stetson was represented by Curtis Lawler (Stetson) and Maygan Cline (Geosyntec), both of whom reviewed the memo with the CAG.
- The May 12 document from Geosyntec to Stetson Engineering documented the completion of the three-dimensional (3D) visualization model of the CMA geology.
- The memorandum was a technical discussion of the 3D geologic model with context for the entire river basin.
- The question arose regarding the WMA/CMA and the EMA. It was noted that the EMA has a different consultant preparing the Groundwater Sustainability Plan. Coordination with the CMA is occurring with assistance by SYRWCD and Stetson to ensure boundaries of the two areas match in the models.
- There was discussion that the interface of the CMA and EMA would not interfere with the overall integration of the data from three different Agencies.
- ~~There were some minor inconsistencies on page 4 regarding the Carcaga (Tca) formation~~ depth in CMA (800-1300). Ms. Cline said she would revisit page 4 and revise, as necessary.
- The CAG requested that geologic symbols are added for clarity to the maps, cross-sections, and stratigraphic columns.

SANTA YNEZ RIVER VALLEY GROUNDWATER BASIN

Mailing Address: P.O. Box 719
Santa Ynez, CA 93460
Phone: (805) 693-1156

MEMORANDUM

DATE: August, 2020

TO: WMA, CMA and EMA GSA
Committees

FROM: GSA Agency Staff

SUBJECT: Management Area Boundary Modifications

Background

This memorandum describes proposed changes to the internal boundaries of the three management areas (MA) in the Santa Ynez River Valley Groundwater Basin¹ (SYRVGB). The proposed changes to the CMA-EMA boundary are based on a request from the City of Solvang and a further analysis of parcel boundaries and hydrogeologic information. The proposed changes to the CMA-WMA boundary are based on an analysis of the hydrologic and hydrogeologic data by Stetson.

The two consultant teams coordinated together on the proposed changes. Agency Staff from all eight agencies in the Basin reviewed the proposed boundary changes. As the Groundwater Sustainability Plans (GSP) and associated technical memoranda are currently being prepared, the timing of the proposed changes will allow the consultants to proceed with preparing the GSP figures with the new boundaries. The proposed changes are shown in Figures 1 and 2. No changes to the DWR Bulletin 118¹ basin boundaries are proposed herein. None of the proposed changes are considered “material changes” as defined by DWR. Table 1 below summarizes the

¹ The extents of the SYRVGB were determined by the Department of Water Resources in Bulletin 118 (“DWR”) and are based on regional geology studies. The SYRVGB is identified as California basin 3-15.

total acres of the SYRVGB and MAs based on original boundaries and proposed revised boundaries.

Table 1. Area Within Original and Revised Boundaries of the WMA, CMA and EMA (Acres)

	Area within Original Boundaries (Acres)	Area within Revised Boundaries (Acres)	% change
Western Management Area (WMA)	85,300	85,600	0%
Central Management Area (CMA)	21,200	21,000	1%
Eastern Management Area (EMA)	96,500	96,400	0%
Total Santa Ynez River Valley Groundwater Basin	203,000	203,000	0%

Proposed Change to CMA-EMA Internal Boundary

The proposed change to the CMA-EMA boundary adjusts the existing boundary between the CMA and EMA to align with parcel and hydrogeologic boundaries. This change is based on updated Santa Barbara County Assessor parcels maps. Additionally, the existing MA boundary split several parcels. The revised boundary does not split any parcels and follows a topographic and geologic break at the base of Skytt Mesa, on the western side of the City of Solvang. The new boundary coincides with the contact between several geologic units which will simplify water budget calculations. All parcels included in the boundary change were previously part of a GSA. No additional land is subject to the Sustainable Groundwater Management Act (SGMA) as a result of the boundary change, therefore not considered a material change by DWR. Figure 1 shows the original and draft proposed boundary between the CMA-EMA.

Proposed Change to WMA-CMA Internal Boundary

The proposed change to the WMA and CMA boundary is based on the following:

- 1) Aligns the MA boundary with the surface water drainage, the local topography and hydrogeology.
- 2) Encloses a large portion of the Careaga formation within the CMA, which aids in calculations for the water budget.

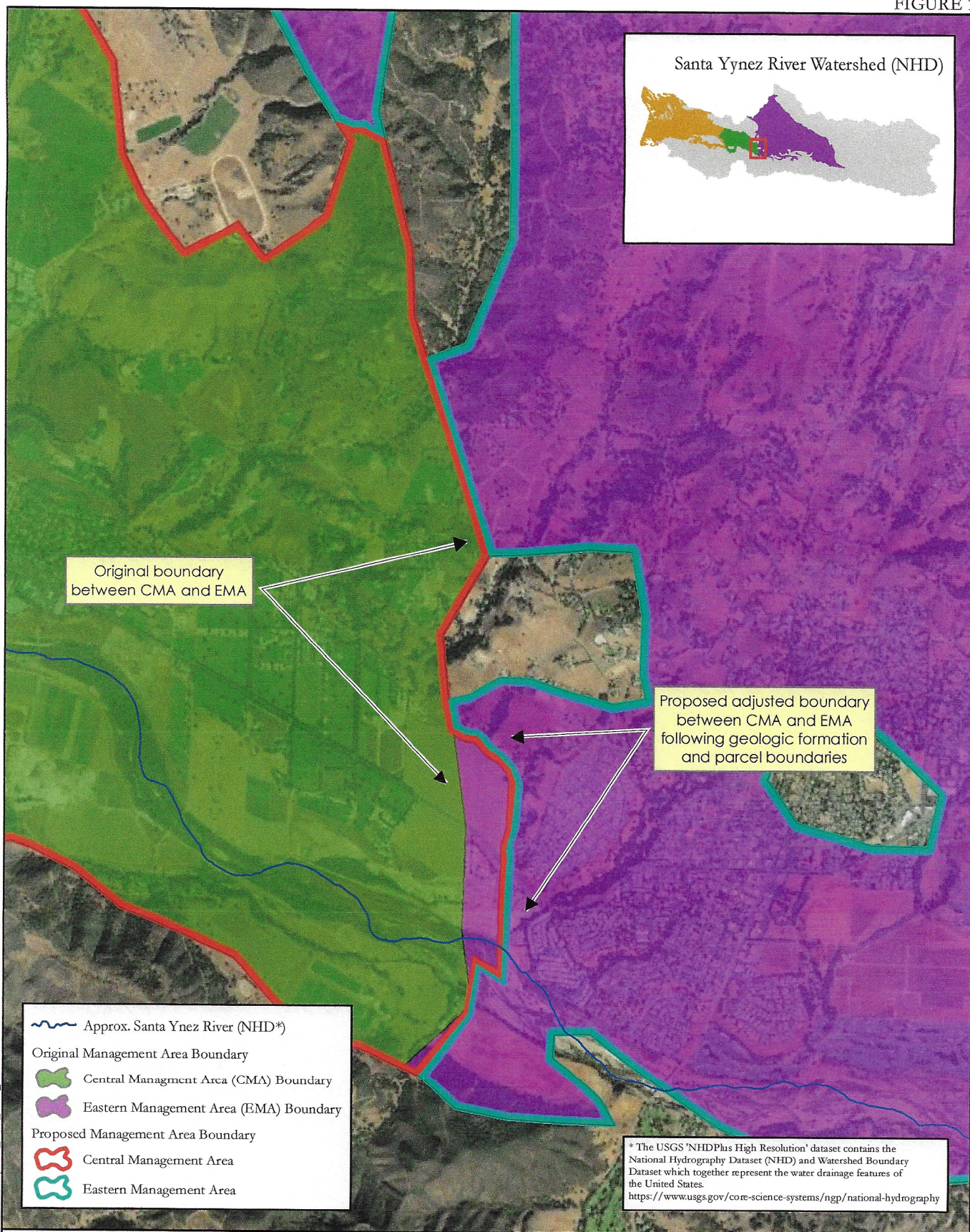
- 3) Aligns the WMA-CMA GSA boundary to the SYRWCD boundary in the Santa Rita and Buellton Uplands.
- 4) Shortens the boundary between the WMA-CMA, which will simplify water budget calculations.
- 5) Moves the MA boundary at the Santa Ynez River near to a former USGS gauge location (ID 11131000) and a bedrock high. The new boundary is less arbitrary than the previous boundary and will make the calculation of groundwater and surface water flux between the CMA and WMA easier to quantify.

Figure 2 shows the original and draft proposed boundary between the WMA-CMA. All parcels included in the boundary change were previously part of a GSA. No additional land is subject to the Sustainable Groundwater Management Act (SGMA) because of the proposed boundary change, and therefore not considered a material change by DWR.

Once the GSAs have concurred with the change, Staff will formerly update the Geographic Information System (GIS) files and upload the revised GIS files to DWRs SGMA Portal with a letter documenting the changes.


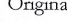





Staff recommendation: Staff recommends that the WMA, CMA and EMA GSAs endorse the proposed boundary changes.

FIGURE 1



Original boundary between CMA and EMA

Proposed adjusted boundary between CMA and EMA following geologic formation and parcel boundaries

-  Approx. Santa Ynez River (NHD*)
-  Original Management Area Boundary
-  Central Management Area (CMA) Boundary
-  Eastern Management Area (EMA) Boundary
-  Proposed Management Area Boundary
-  Central Management Area
-  Eastern Management Area

* The USGS 'NHDPlus High Resolution' dataset contains the National Hydrography Dataset (NHD) and Watershed Boundary Dataset which together represent the water drainage features of the United States.
<https://www.usgs.gov/core-science-systems/ngp/national-hydrography>

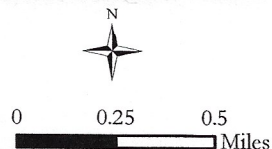
Document Path: J:\yr2710\Draft-Boundary\figs_CMA_EMA_20200731.mxd



DRAFT
7/31/2020

**PROPOSED BOUNDARY ADJUSTMENTS
CENTRAL AND EASTERN MANAGEMENT AREAS**

Proposed adjusted boundary between CMA and EMA following geologic water-bearing formation boundary and parcels; No exterior DWR Bulletin 118 boundaries are changed.



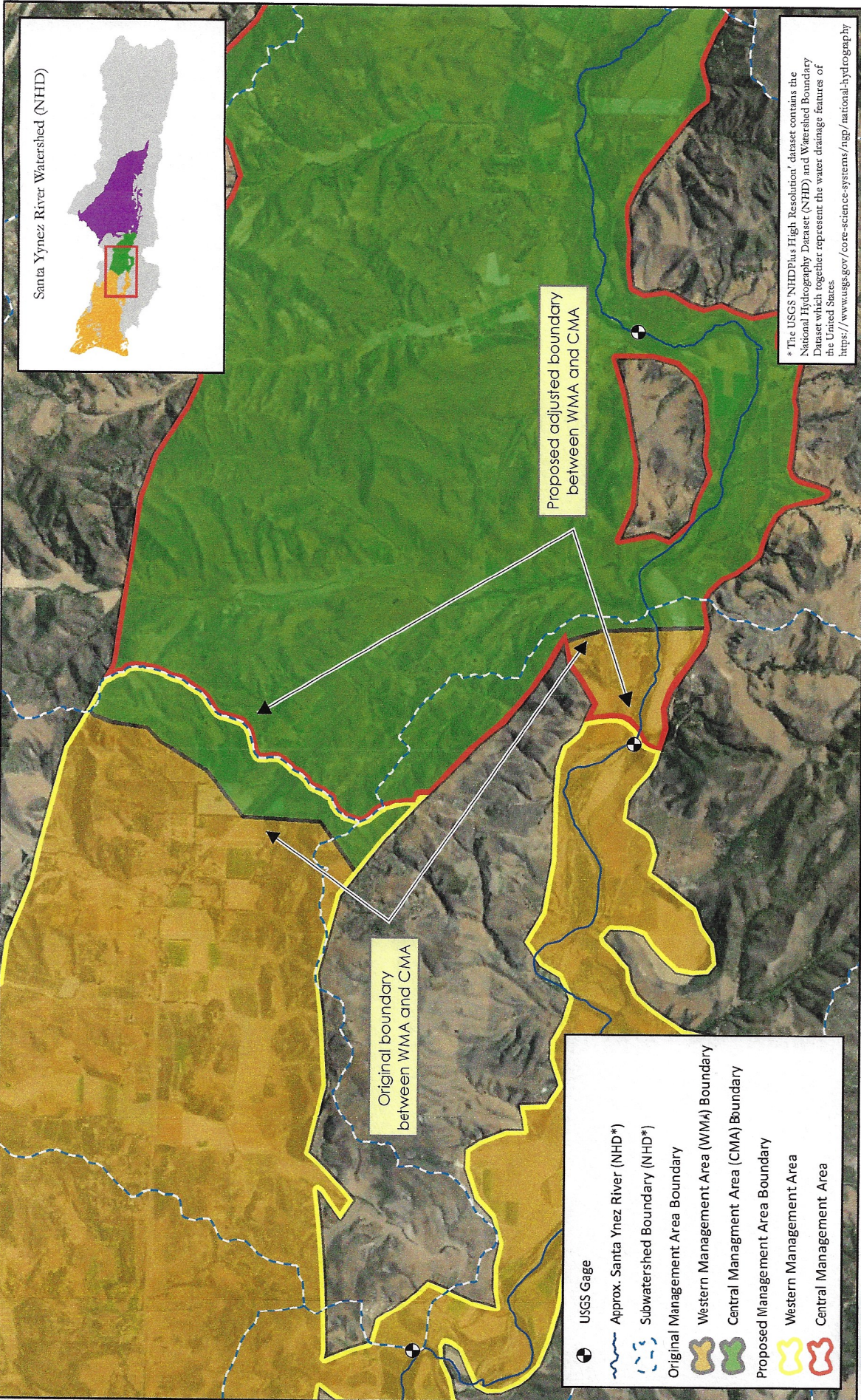


FIGURE 2



PROPOSED BOUNDARY ADJUSTMENTS CENTRAL AND WESTERN MANAGEMENT AREAS

This map proposes that internal management area boundaries within the Santa Ynez River Groundwater Basin be redrawn to follow watershed boundaries more accurately and to utilize a historical USGS gage location; no exterior DWR Bulletin 118 boundaries are changed.

DRAFT
7/31/2020

