

CMA

Santa Ynez River Valley Groundwater Basin
Central Management Area
Groundwater Sustainability Agency

August 2020 Status Update



STETSON
ENGINEERS INC.

DUDEK

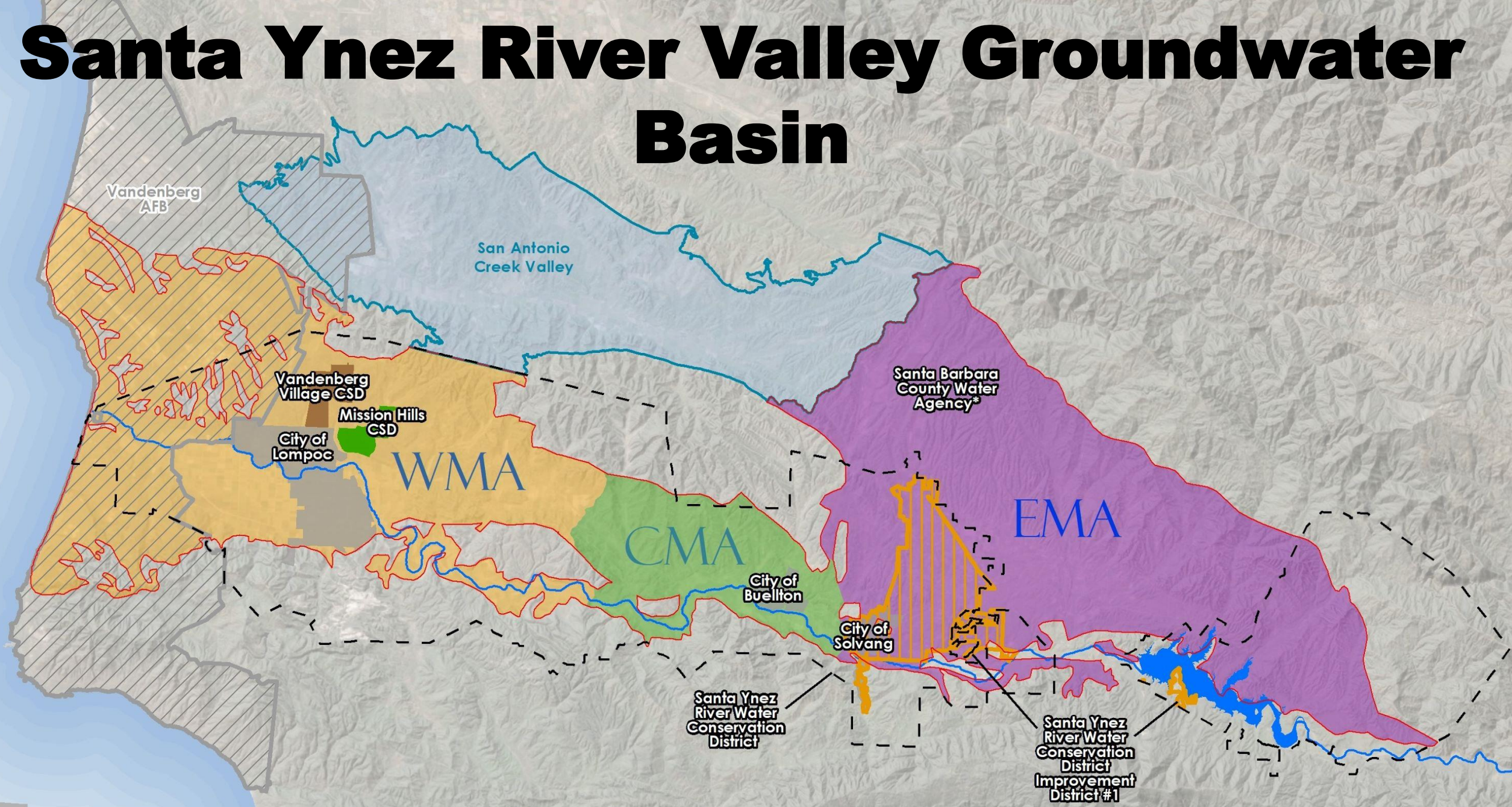
Geosyntec 
consultants

engineers | scientists | innovators

Agenda

1. SGMA & GSA Overview
2. Timeline & Milestones
3. Consultant Team Progress
4. Next Steps
5. Schedule
6. Questions

Santa Ynez River Valley Groundwater Basin

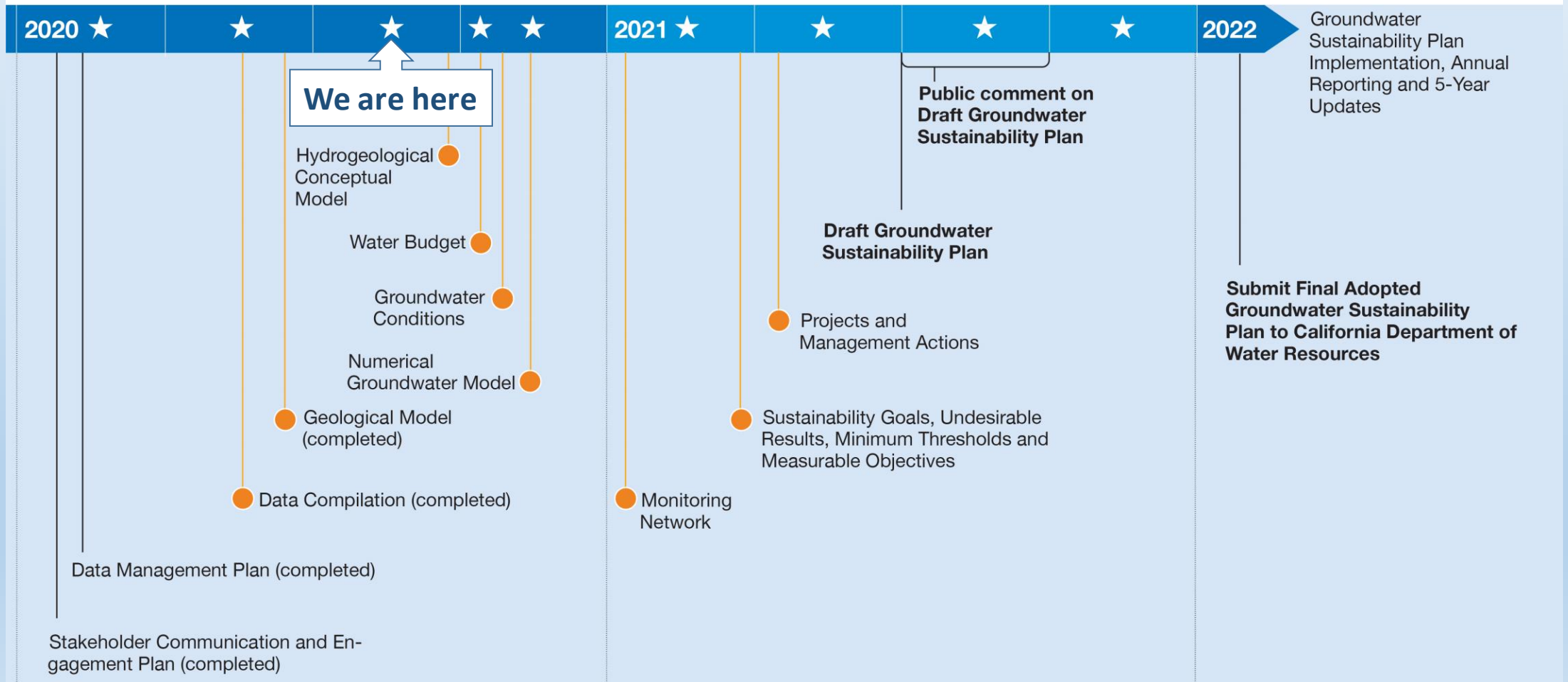


Updated Aug. 2020, includes WMA/CMA/EMA boundary updates.

Timeline and Milestones

Groundwater Sustainability Plan Development Milestones

★ Groundwater Sustainability Agency Committee Public Meeting ● Technical Memorandum



Consultant Team Progress

Geosyntec
consultants

TO: Stinson Engineers
SUBJECT: DRAFT Technical Memorandum Regional Geology and 3D Geologic Model for the Santa Ynez River Valley Groundwater Basin
PREPARED BY: Faye Tamm, Senior Professional Megan Chao, Senior Geologist Mark Cervetti, Senior Principal Hydrogeologist
DATE: May 12, 2020

1. INTRODUCTION

This technical memorandum is prepared as part of the hydrologic conceptual model (HCM) for the Western and Central Management Areas (WMA and CMA), respectively (Groundwater Sustainability Agency (GSA) within the larger Santa Ynez River Valley Groundwater Basin (SYRVGB). This technical memorandum focuses on the geologic units within the SYRVGB, and the subsurface geologic model built to visualize these units. The geologic characteristics of these units are then considered in a separate model (which provides principal aquifers within the basin. This technical memo identifies the modeled geologic units and existing literature that identifies the water-bearing tendency of each unit but does not include an in-depth principal aquifer analysis or discussion.

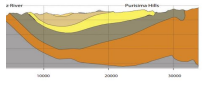
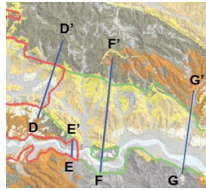
The HCM is the conceptual understanding of the physical characteristics related to the regional hydrology, land use, geologic units and structures, groundwater quality, principal groundwater aquifers, and principal aquifers of the WMA and CMA portions of the SYRVGB (basin). Understanding the regional geologic setting and structural configuration is integral to conducting subsequent technical analysis of the basin, including presence, absence and correlation of principal aquifers, identification of appropriate monitoring networks, structural groundwater modeling, and identification of project and management actions in accordance with the Sustainable Groundwater Management Act (SGMA).

A detailed subsurface three-dimensional model of the geologic units and structures (model) that comprise the basin was developed from publicly available published reports and data sources from the WMA and CMA GSAs. The model is intended for use as a visualization tool to communicate the regional geologic setting to the WMA and CMA GSAs, as well as the public, in accordance with SGMA. Additionally, the model will be used in concert with the Water Budget and the Data Management System to identify potential data gaps within the basin where additional data is needed.

This technical memorandum does not include the Central Management Area (CMA) GSA within the SYRVGB. The EMA GSA is supported by a different teaming team.

Geosyntec | Stinson | 1

Section Locations



Sustainable Groundwater Management Quarterly Newsletter No. 1 June 2020

Santa Ynez River Valley Groundwater Basin (SYRVGB)

The Sustainable Groundwater Management Act (SGMA), signed into law in 2014, created a new framework for groundwater management in California. SGMA established a new structure for local groundwater management through Groundwater Sustainability Agencies (GSAs). The SYRVGB has three management areas each with their own GSA Committee comprised of local participating Agencies:

- Western Management Area (WMA) GSA Committee**
 - Santa Ynez River Water Conservation District + City of Lompoc
 - Mission Hills CSD + Vandenberg Village CSD
 - Santa Barbara County Water Agency
- Central Management Area (CMA) GSA Committee**
 - Santa Ynez River Water Conservation District + City of Buellton
 - Santa Barbara County Water Agency
- Eastern Management Area (EMA) GSA Committee**
 - Santa Ynez River Water Conservation District + City of Solvang
 - Santa Barbara County Water Agency + Santa Ynez River Water Conservation District, Improvement District No. 1

Each GSA Committee is preparing its own Groundwater Sustainability Plan (GSP) that will describe the path to groundwater sustainability. The GSPs will determine how much groundwater can be used in the future and could include restrictions on pumping.

All three GSPs will be completed in early 2022. Progress updates will be given in each quarterly GSA committee meeting and draft documents will be available for public review and comment on the website (www.SantaYnezWater.org). Participation by members of the community in developing the GSPs is important and each of the GSA Committees has adopted an outreach and engagement plan to guide the public participation process.

Management Areas and Participating Local Agencies in the SYRVGB

For more information, please visit www.SantaYnezWater.org or call (805) 693-1156 ext. 403

Geological Model Tech Memo

Outreach Newsletter

DMS Tech Memo & Data Collection

DRAFT TECHNICAL MEMORANDUM
2171 E. Francisco Blvd., Suite K - San Rafael, California 94901
TEL: (415) 457-0701 FAX: (415) 457-1638 e-mail: info@stinsonengineers.com

TO: CMA GSA DATE: August 15, 2020
FROM: Stinson Engineers/Geosyntec/Dusk JOB NO: 2711-03
RE: Hydrologic Conceptual Model (HCM)

TABLE OF CONTENTS

HYDROLOGIC CONCEPTUAL MODEL	5
1.1 CENTRAL MANAGEMENT AREA EXTENTS AND BOUNDARIES	6
1.2 CMA SUBAREAS	7
1.3.1 SANTA YNEZ RIVER ALLUVIUM SUBAREA	7
1.3.2 BUELLTON PLAIN SUBAREA	8
2. TOPOGRAPHY AND SURFACE WATER BODIES	8
2.1 DIRECT PRECIPITATION	9
2.1.1 SOILS AND FORESTATION	9
2.1.2 WATERED AND NON-WATERED SURFACE WATER BODIES	10
2.2.1 RIVERS AND STREAMS	10
2.2.2 WATER EXCESS	11
2.2.3 WATER IMPORTS	12
2.2.4 WATER EXPORTS	13
2.2.5 TREATED WASTEWATER SOURCES	13
3. ADDITIONAL SURFACE WATER AND GROUNDWATER INTERACTIONS	13
3.1 GROUNDWATER USE	14
3.1.1 SANTA YNEZ RIVER ALLUVIUM SUBAREA	15
3.1.2 LOMPOC PLAIN SUBAREA	15
3.1.3 BUELLTON SUBAREA	16
3.1.4 LOMPOC TERRACE SUBAREA	16
3.1.5 LOMPOC UPLAND SUBAREA	16
3.1.6 SANTA RITA UPLAND SUBAREA	16
3.2 AGRICULTURAL LANDS	17
3.3 PASTORAL USE	18
3.4 RECREATION AREAS	18
3.5 INDUSTRIAL AREAS	18
3.6 BUREAU OF LAND MANAGEMENT	18
3.6.1 LOMPOC TERRACE SUBAREA	19
3.6.2 LOMPOC PLAIN SUBAREA	19
4. WMA AND AQUIFER GEOLOGY	19
4.1 REGIONAL MOVEMENT AND SETTING	20
4.2 MAPPED SURFACE GEOLOGY	20

Hydrologic Conceptual Model | Page 1

DRAFT HCM Tech Memo

DRAFT TECHNICAL MEMORANDUM
2171 E. Francisco Blvd., Suite K - San Rafael, California 94901
TEL: (415) 457-0701 FAX: (415) 457-1638 e-mail: info@stinsonengineers.com

TO: GSA Agency Staff DATE: August 2020
FROM: Stinson Engineers JOB NO: 2711-04
RE: DRAFT Central Management Area Water Budget for the Santa Ynez River Valley Groundwater Basin Groundwater Sustainability Plan

This DRAFT Water Budget Technical Memorandum is written for inclusion in a chapter in the Santa Ynez River Valley Groundwater Basin Groundwater Sustainability Plan ("GSP") in accordance with the Sustainable Groundwater Management Act ("SGMA"). The GSP is an interagency collaboration of eight public agencies involved in water resources in Santa Ynez River Valley Groundwater Basin ("SYRVGB"). The SYRVGB is divided into three management areas: Western Management Area ("WMA"), Central Management Area ("CMA"), and Eastern Management Area ("EMA"). The WMA Water Budget Technical Memorandum is prepared by Stinson Engineers Project Team (Stinson, Geosyntec, and Dusk) for the WMA Groundwater Sustainability Agency ("GSA") in cooperation with CMA and EMA GSAs. Other chapters of the GSP will describe the hydrologic conceptual model, management, coordination, past and previous management plans, and groundwater conditions in the SYRVGB.

TABLE OF CONTENTS

1. WATER BUDGET LAND AREA AND BOUNDARIES	1.1. SANTA YNEZ RIVER GROUNDWATER BASIN	1.2. SANTA YNEZ RIVER WATERSHED	1.3. NEIGHBORING GROUNDWATER BOUNDARIES		
2. WATER BUDGET COMPONENTS	2.1. RIVER-BASED FLOWS	2.1.1. STATE WATER PROJECT	2.1.2. SURFACE WATER INFLOW AND OUTFLOW	2.1.3. GROUNDWATER INFLOW AND OUTFLOW	2.2. GROUNDWATER DISCHARGE/PUMPING

DRAFT Water Budget

DRAFT TECHNICAL MEMORANDUM
2171 E. Francisco Blvd., Suite K - San Rafael, California 94901
TEL: (415) 457-0701 FAX: (415) 457-1638 e-mail: info@stinsonengineers.com

TO: GSA Agency Staff DATE: May 5, 2020
FROM: Stinson Engineers JOB NO: 2710-11 - Santa Ynez SOMA
RE: DRAFT Phase I Data Completion for the Santa Ynez River Groundwater Basin Data Management System (DMS) (WMA and CMA)

INTRODUCTION

This memorandum describes the first phase of data compilation collected and entered in to the data management system (DMS) developed for the Santa Ynez River Valley Groundwater Basin (SYRVGB) Western Management Area (WMA) and Central Management Area (CMA). This is a first step in developing and implementing a Sustainable Groundwater Management Act (SGMA) plan for these portions of the SYRVGB. It is anticipated that there will be additional phases of data that will be entered into the DMS. After each phase of data entry, this memorandum will be updated.

A description of the DMS was provided in the Data Management Plan (DMP), which included overall goals of the DMS, a description of the DMS platform, and how this addresses the needs of SGMA. This memorandum provides a snapshot view of data collected and entered into the DMS as of March 2020.



Progress Report
2171 E. Francisco Blvd., Suite K - San Rafael, California 94901
Phone: (415) 457-0701 FAX: (415) 457-1638 Web site: www.stinsonengineers.com

JN 2710 Land Model Progress Report

The conceptualization and physical extents of the FEMFLOW3D groundwater flow model is being converted to the finite difference MODFLOW-UGM model code (LDMPOC-UGM). The modeling work completed through this billing period are summarized in the following bullet points. The attached table presents the LDMPOC-UGM Model packages and model conversion progress.

- GIS was used to map the FEMFLOW3D model structure into polygons for the UGM model - developing six layers and 29,055 active cells. Cell discretization provided the horizontal extent and vertical elevation for each model cell. The grid system represents the geologic structure of the aquifers in the Lompoc Area.
- All model layers are conveniently specified which allow the model layer types to convert between confined and unconfined depending on the water level conditions.
- Model simulation period was extended from 357 monthly stress periods (January 1983 through September 2012) to 436 monthly stress periods (October 1982 and September 2020).
- FEMFLOW3D hydraulic properties (Kxy, Kz) and specified flux-head (subflow boundary river, lagoons) were translated into MODFLOW-UGM.
- Using USGS hydrographic survey, the Santa Ynez River and 12 tributaries were mapped onto layer 1 model cells to develop the Streamflow Routing package for the model.
- Modeling conference calls were had to streamline model conversion from FEMFLOW3D into MODFLOW-UGM.
- Digital land use maps were compiled for 17 years (every two years from 1984 to 2016). Seven categories were delineated by model cell for assigning recharge and evapotranspiration (ET) inputs.
- Pumping distribution was developed for 187 alluvial irrigation wells, 7 upland irrigation wells, and 1 residential well. Annual pumping by well was transferred for Lompoc, Mission Hills, and Vandenberg Village wells (Figure 1).

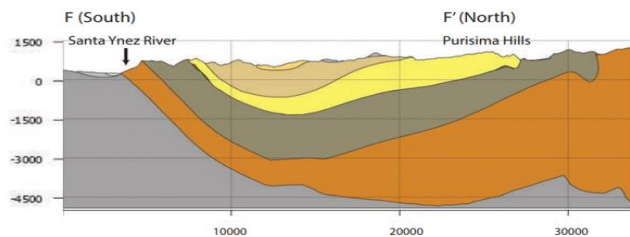
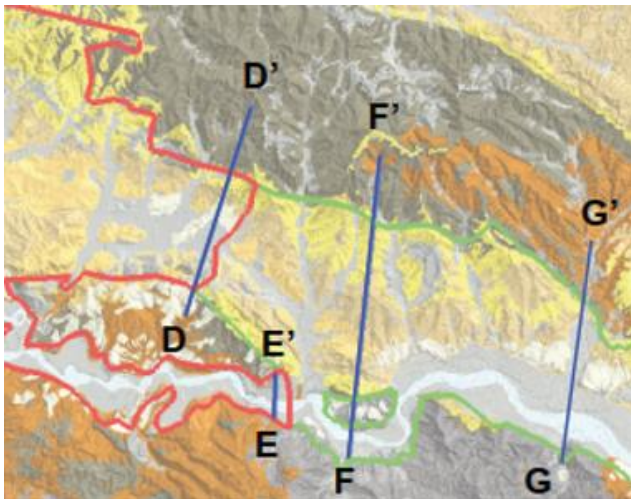
Stinson Engineers Inc. | Page 1

Groundwater Modeling

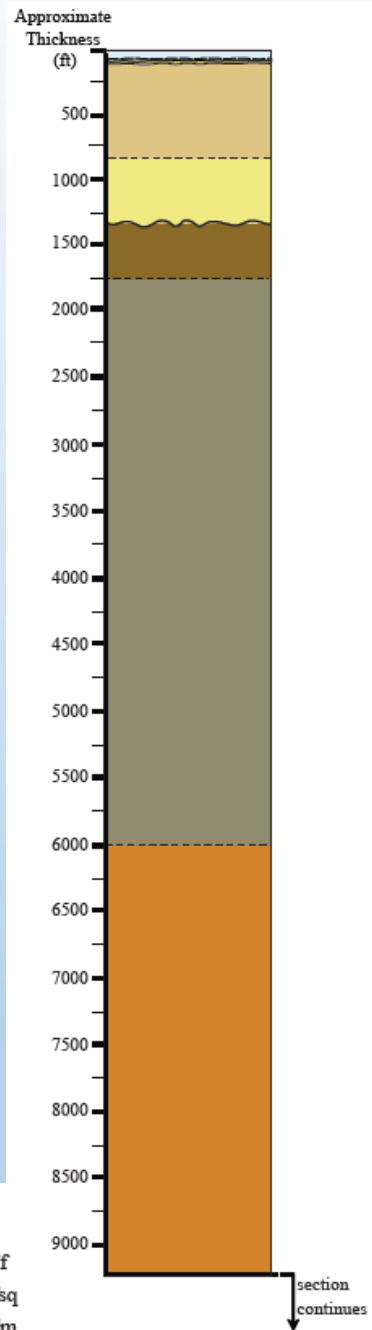
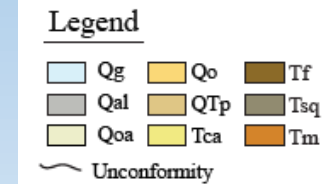
Geologic Model

Technical Memorandum

Section Locations



- Released for CAG and public review
- Comments considered and incorporated
- DRAFT Final submitted to the GSA committee
- SkyTEM data may be used later to refine the model



Outreach & Engagement

Sustainable Groundwater Management Quarterly Newsletter No. 1 June 2020

Santa Ynez River Valley Groundwater Basin (SYRVGB)

The Sustainable Groundwater Management Act (SGMA), signed into law in 2014, created a new framework for groundwater management in California. SGMA established a new structure for local groundwater management through Groundwater Sustainability Agencies (GSAs). The SYRVGB has three management areas each with their own GSA Committee comprised of local participating Agencies:

Western Management Area (WMA) GSA Committee

- Santa Ynez River Water Conservation District • City of Lompoc
- Mission Hills CSD • Vandenberg Village CSD
- Santa Barbara County Water Agency

Central Management Area (CMA) GSA Committee

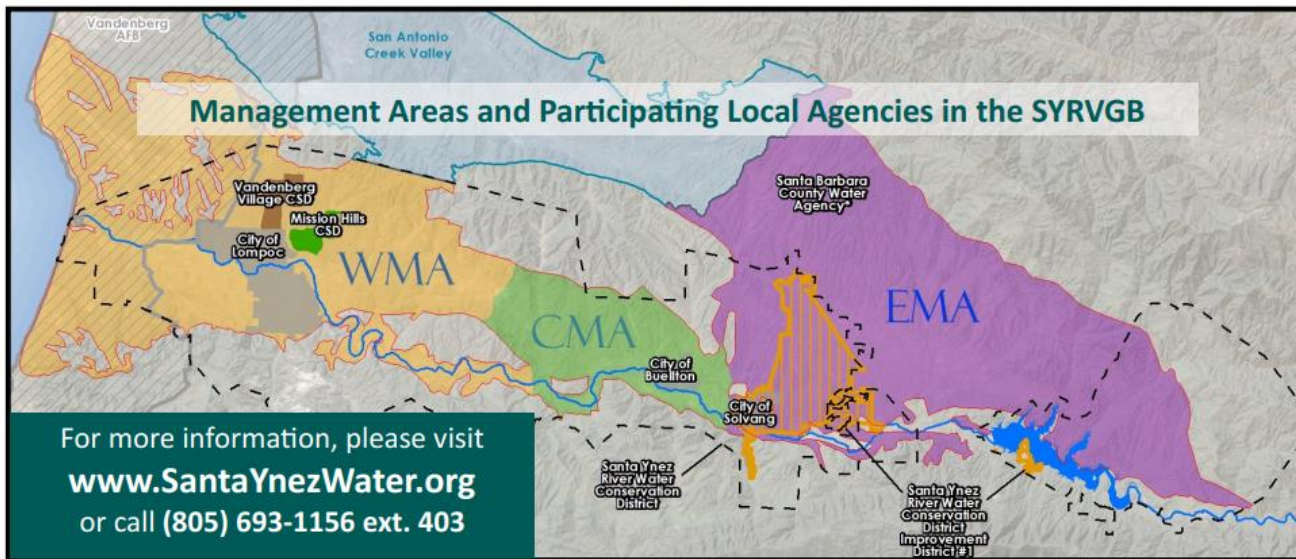
- Santa Ynez River Water Conservation District • City of Buellton
- Santa Barbara County Water Agency

Eastern Management Area (EMA) GSA Committee

- Santa Ynez River Water Conservation District • City of Solvang
- Santa Barbara County Water Agency • Santa Ynez River Water Conservation District, Improvement District No. 1

Each GSA Committee is preparing its own Groundwater Sustainability Plan (GSP) that will describe the path to groundwater sustainability. **The GSPs will determine how much groundwater can be used in the future and could include restrictions on pumping.**

All three GSPs will be completed in early 2022. Progress updates will be given in each quarterly GSA Committee meeting and draft documents will be available for public review and comment on the website (www.SantaYnezWater.org). **Participation by members of the community in developing the GSPs is important and each of the GSA Committees has adopted an outreach and engagement plan to guide the public participation process.**

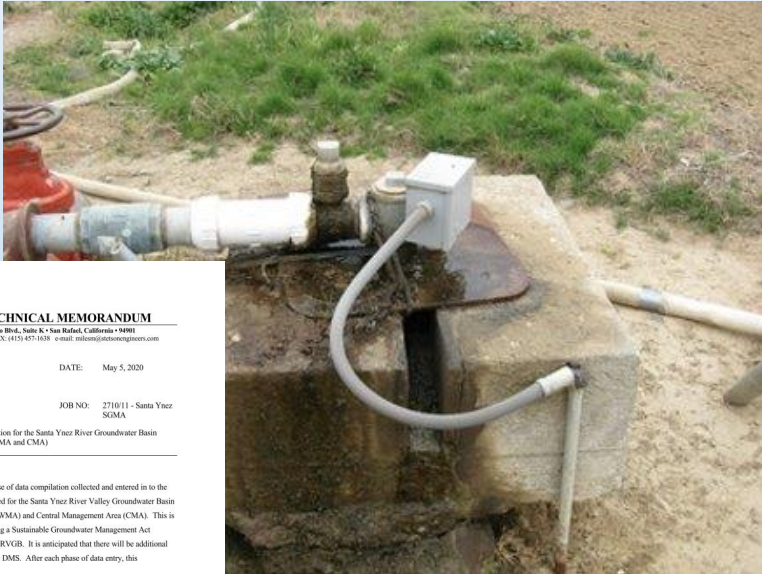


First Newsletter Created

- English and Spanish versions
- CAG feedback
- Distributed in Water Bills
- Available online at: SantaYnezWater.org and GSA member agency websites

FAQs also developed and available on SantaYnezWater.org

DMS Tech Memo and Data Update



DMS Tech Memo released for CAG and public review. Comments considered and DRAFT Final submitted to GSA.

DMS Update:

- Collected field data incorporated
- Groundwater levels for USBR wells updated through June 2020
- Review data provided by the SYRWCD (Parent District)

*Buellton Uplands well pictured

 **DRAFT TECHNICAL MEMORANDUM**
2177 E. Francisco Blvd., Suite K • San Rafael, California • 94901
TEL: (415) 457-0700 FAX: (415) 457-0338 e-mail: info@stetsonengineers.com

TO: GSA Agency Staff
WMA Committee
CMA Committee

DATE: May 5, 2020

FROM: Stetson Engineers

JOB NO: 2710/11 - Santa Ynez
SGMA

RE: **DRAFT** Phase I Data Compilation for the Santa Ynez River Groundwater Basin
Data Management System (WMA and CMA)

INTRODUCTION

This memorandum describes the first phase of data compilation collected and entered in to the data management system (DMS) developed for the Santa Ynez River Valley Groundwater Basin (SYRVGB) Western Management Area (WMA) and Central Management Area (CMA). This is a first step in developing and implementing a Sustainable Groundwater Management Act (SGMA) plan for these portions of the SYRVGB. It is anticipated that there will be additional phases of data that will be entered into the DMS. After each phase of data entry, this memorandum will be updated.

A description of the DMS was provided in the Data Management Plan (DMP), which included overall goals of the DMS, a description of the DMS platform, and how this addresses the needs of SGMA. This memorandum provides a snapshot view of data collected and entered into the DMS as of March 2020.

Hydrogeologic Conceptual Model (HCM)

Describes the conceptual understanding of the general physical characteristics of the groundwater basin.

The Hydrogeological Conceptual Model consists of:

- Written narrative description
- Graphics that clearly portray the geographic and climatic setting, regional geology and structures, groundwater basin geometry, general groundwater water quality, and consumptive water uses in the basin.

Hydrogeologic Conceptual Model (HCM)



DRAFT TECHNICAL MEMORANDUM

2171 E. Francisco Blvd., Suite K • San Rafael, California • 94901
TEL: (415) 457-0701 FAX: (415) 457-1638 e-mail: sr@stetsonengineers.com

TO: CMA GSA DATE: August 15, 2020
FROM: Stetson Engineers/ Geosyntec/ Dudek JOB NO: 2711-03
RE: Hydrogeologic Conceptual Model (HCM)

TABLE OF CONTENTS

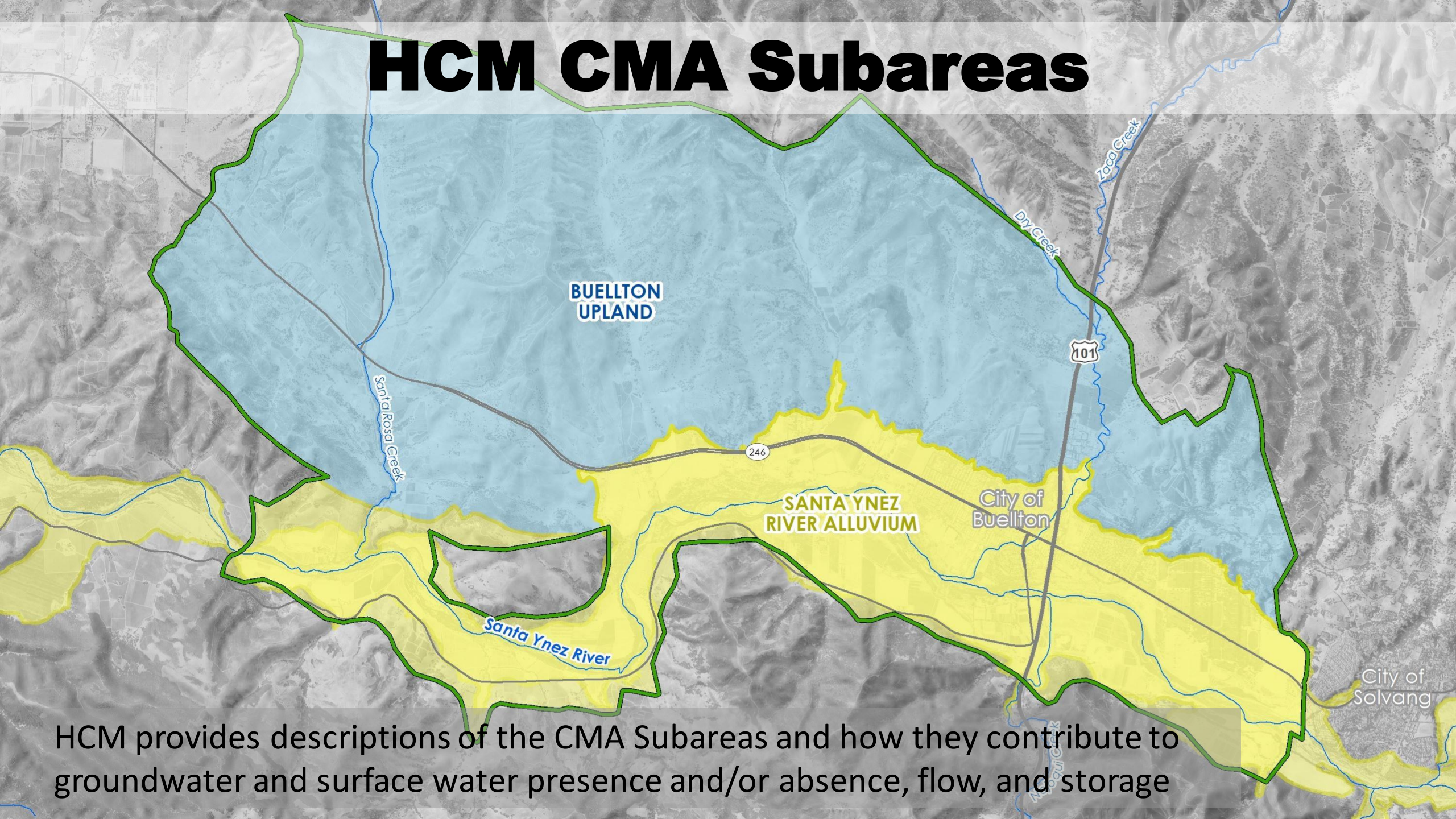
HYDROGEOLOGIC CONCEPTUAL MODEL	5
1. CENTRAL MANAGEMENT AREA EXTENTS AND SUBAREAS	6
1.1. CMA SUBAREAS	7
1.1.1. SANTA YNEZ RIVER ALLUVIUM SUBAREA	7
1.1.2. BUELLTON UPLAND SUBAREA	8
2. TOPOGRAPHY AND SURFACE WATER BODIES	8
2.1. DIRECT PRECIPITATION	9
2.1.1. SOILS AND INFILTRATION	9
2.2. WATERSHED AND SIGNIFICANT SURFACE WATER BODIES	10
2.2.1. RIVERS AND STREAMS	10
2.2.2. PACIFIC OCEAN	11
2.2.3. WATER IMPORTS	12
2.2.4. WATER EXPORTS	13
2.2.5. TREATED WASTEWATER SOURCES	13
3. ADDITIONAL SURFACE WATER AND GROUNDWATER INTERACTIONS	14
3.1. GROUNDWATER USE	14
3.1.1. SANTA YNEZ RIVER ALLUVIUM SUBAREA	15
3.1.2. LOMPOC PLAIN SUBAREA	15
3.1.3. BURTON MESA SUBAREA	16
3.1.4. LOMPOC TERRACE SUBAREA	16
3.1.5. LOMPOC UPLAND SUBAREA	16
3.1.6. SANTA RITA UPLAND SUBAREA	16
3.2. AGRICULTURAL LANDS	17
3.3. PHREATOPHYTES	17
3.4. RECHARGE AREAS	18
3.5. DISCHARGE AREAS	18
3.5.1. BURTON MESA SUBAREA	18
3.5.2. LOMPOC TERRACE SUBAREA	19
3.5.3. LOMPOC PLAIN SUBAREA	19
4. WMA AND ADJACENT GEOLOGY	19
4.1. REGIONAL MOVEMENT AND SETTING	20
4.2. MAPPED SURFACE GEOLOGY	20

DRAFT HCM released to Staff

HCM Sections:

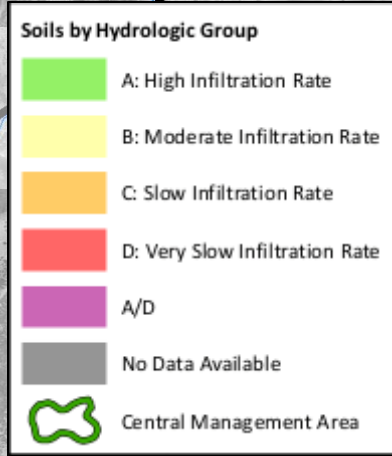
- CMA Extents and Subareas
- Topography and Surface Water Bodies
- Surface Water and Groundwater Interactions
- Regional Geology
- Principal Aquifers & Aquitards

HCM CMA Subareas



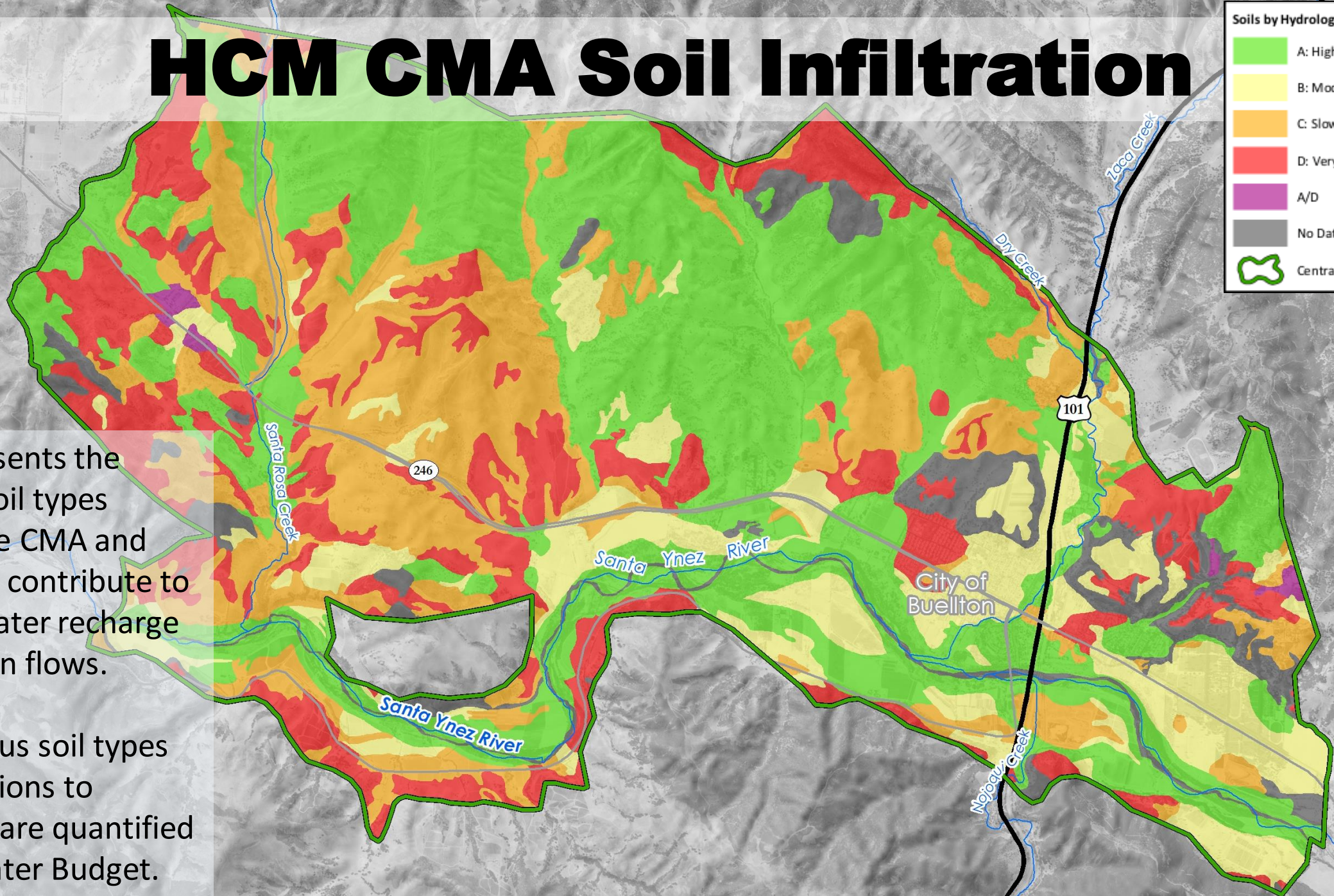
HCM provides descriptions of the CMA Subareas and how they contribute to groundwater and surface water presence and/or absence, flow, and storage

HCM CMA Soil Infiltration



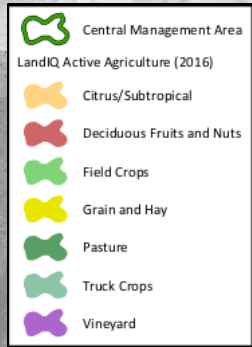
HCM presents the various soil types within the CMA and how they contribute to groundwater recharge and return flows.

The various soil types contributions to recharge are quantified in the Water Budget.

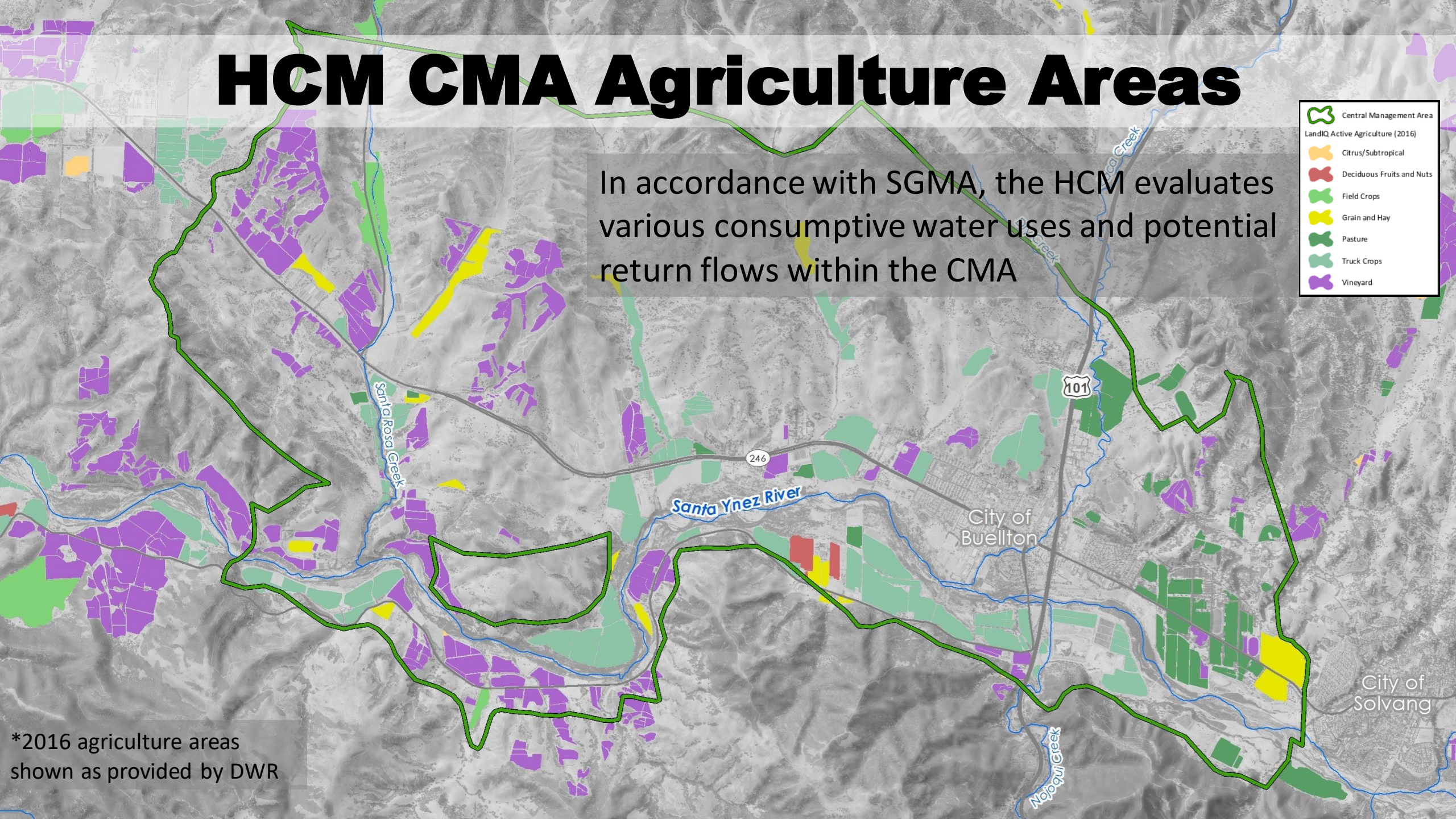


HCM CMA Agriculture Areas

In accordance with SGMA, the HCM evaluates various consumptive water uses and potential return flows within the CMA



*2016 agriculture areas shown as provided by DWR



Hydrogeologic Conceptual Model (HCM)



DRAFT TECHNICAL MEMORANDUM

2171 E. Francisco Blvd., Suite K • San Rafael, California • 94901
TEL: (415) 457-0701 FAX: (415) 457-1638 e-mail: sr@stetsonengineers.com

TO: CMA GSA DATE: August 13, 2020
FROM: Stetson Engineers/ Geosyntec/ Dudek JOB NO: 2710-03
RE: Hydrogeologic Conceptual Model (HCM)

TABLE OF CONTENTS

HYDROGEOLOGIC CONCEPTUAL MODEL	6
1. WESTERN MANAGEMENT AREA EXTENTS AND SUBAREAS	7
1.1. WMA BOUNDARIES	8
1.2. WMA SUBAREAS	8
1.2.1. SANTA YNEZ RIVER ALLUVIUM SUBAREA	9
1.2.2. LOMPOC PLAIN SUBAREA	9
1.2.3. BURTON MESA SUBAREA	9
1.2.4. LOMPOC UPLAND SUBAREA	10
1.2.5. SANTA RITA UPLAND SUBAREA	11
2. TOPOGRAPHY AND SURFACE WATER BODIES	11
2.1. DIRECT PRECIPITATION	12
2.1.1. SOILS AND INFILTRATION	12
2.2. RECHARGE AREAS	13
2.3. WATERSHED AND SIGNIFICANT SURFACE WATER BODIES	13
2.3.1. RIVERS AND STREAMS	14
2.3.2. PACIFIC OCEAN	15
A. LOMPOC PLAIN	15
B. BURTON MESA	16
C. LOMPOC TERRACE	16
2.3.3. WATER IMPORTS	16
2.3.4. WATER EXPORTS	17
2.3.5. TREATED WASTEWATER SOURCES	17
3. ADDITIONAL SURFACE WATER AND GROUNDWATER INTERACTIONS	18
3.1. PRIMARY USE OF GROUNDWATER	18
3.1.1. SANTA YNEZ RIVER ALLUVIUM SUBAREA	19
3.1.2. LOMPOC PLAIN SUBAREA	19
3.1.3. BURTON MESA SUBAREA	19
3.1.4. LOMPOC TERRACE SUBAREA	20
3.1.5. LOMPOC UPLAND SUBAREA	20
3.1.6. SANTA RITA UPLAND SUBAREA	20
3.2. AGRICULTURAL LANDS	21

- DRAFT HCM released to Staff in Aug
- Release to GSA committee at next meeting
- Plan to workshop the information for the GSA, public and CAG

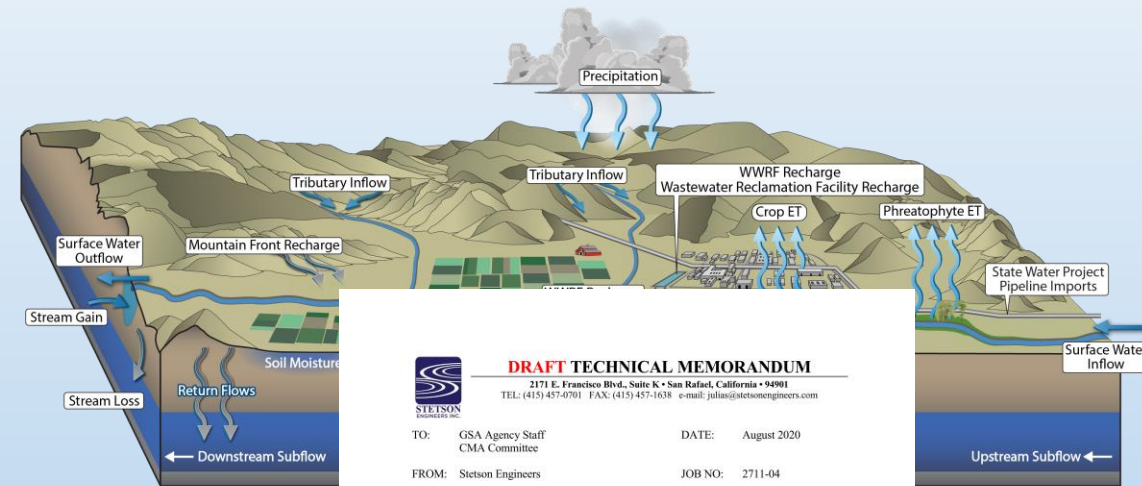
Water Budget Technical Memo (TM)

The accounting and characterization of spatial and temporal distribution of inflows and outflows to a watershed, groundwater basin, or management area.

Key Water Budget components:

- Total surface water entering and leaving the basin
- Inflows and outflows to the groundwater system
- The annual change in groundwater storage volume

CENTRAL MANAGEMENT AREA OF THE
SANTA YNEZ RIVER VALLEY GROUNDWATER BASIN



DRAFT TECHNICAL MEMORANDUM

2171 E. Francisco Blvd., Suite K • San Rafael, California • 94901
TEL: (415) 457-0701 FAX: (415) 457-1038 e-mail: julian@stetsonengineers.com

TO: GSA Agency Staff
CMA Committee

DATE: August 2020

FROM: Stetson Engineers

JOB NO: 2711-04

RE: **DRAFT** Central Management Area Water Budget for the Santa Ynez River Valley
Groundwater Basin Groundwater Sustainability Plan

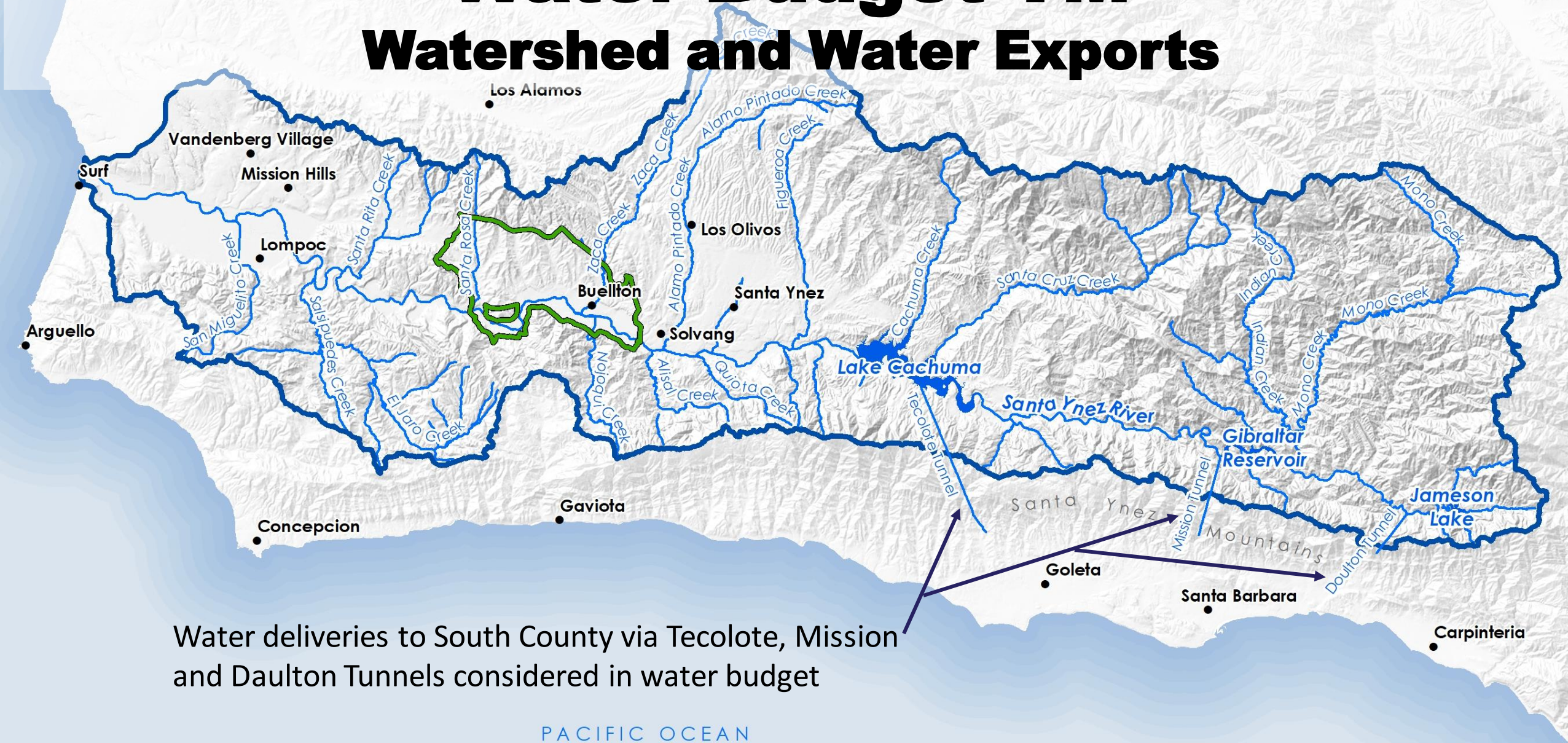
This DRAFT Water Budget Technical Memorandum is written for inclusion as a chapter in the Santa Ynez River Valley Groundwater Basin Groundwater Sustainability Plan ("GSP") in accordance with the Sustainable Groundwater Management Act ("SGMA"). The GSP is an interagency collaboration of eight public agencies involved in water resources in Santa Ynez River Valley Groundwater Basin ("SYRVGB"). The SYRVGB is divided into three management areas: Western Management Area ("WMA"), Central Management Area ("CMA"), and Eastern Management Area ("EMA"). This WMA Water Budget Technical Memorandum is prepared by Stetson Engineers Project Team (Stetson, Geosyntec, and Dudek) for the WMA Groundwater Sustainability Agency ("GSA") in cooperation with CMA and EMA GSAs. Other chapters of the GSP will describe the hydrogeologic conceptual model, management coordination, past and previous management plans, and groundwater conditions in the SYRVGB.

TABLE OF CONTENTS

1. WATER BUDGET LAND AREA AND BOUNDARIES
 - 1.1. SANTA YNEZ RIVER GROUNDWATER BASIN
 - 1.2. SANTA YNEZ RIVER WATERSHED
 - 1.3. NEIGHBORING GROUNDWATER BOUNDARIES
2. WATER BUDGET COMPONENTS
 - 2.1. INTER-BASIN FLOWS
 - 2.1.1. STATE WATER PROJECT
 - 2.1.2. SURFACE WATER INFLOW AND OUTFLOW
 - 2.1.3. GROUNDWATER INFLOW AND OUTFLOW
 - 2.2. GROUNDWATER DISCHARGE/PUMPING

Water Budget TM

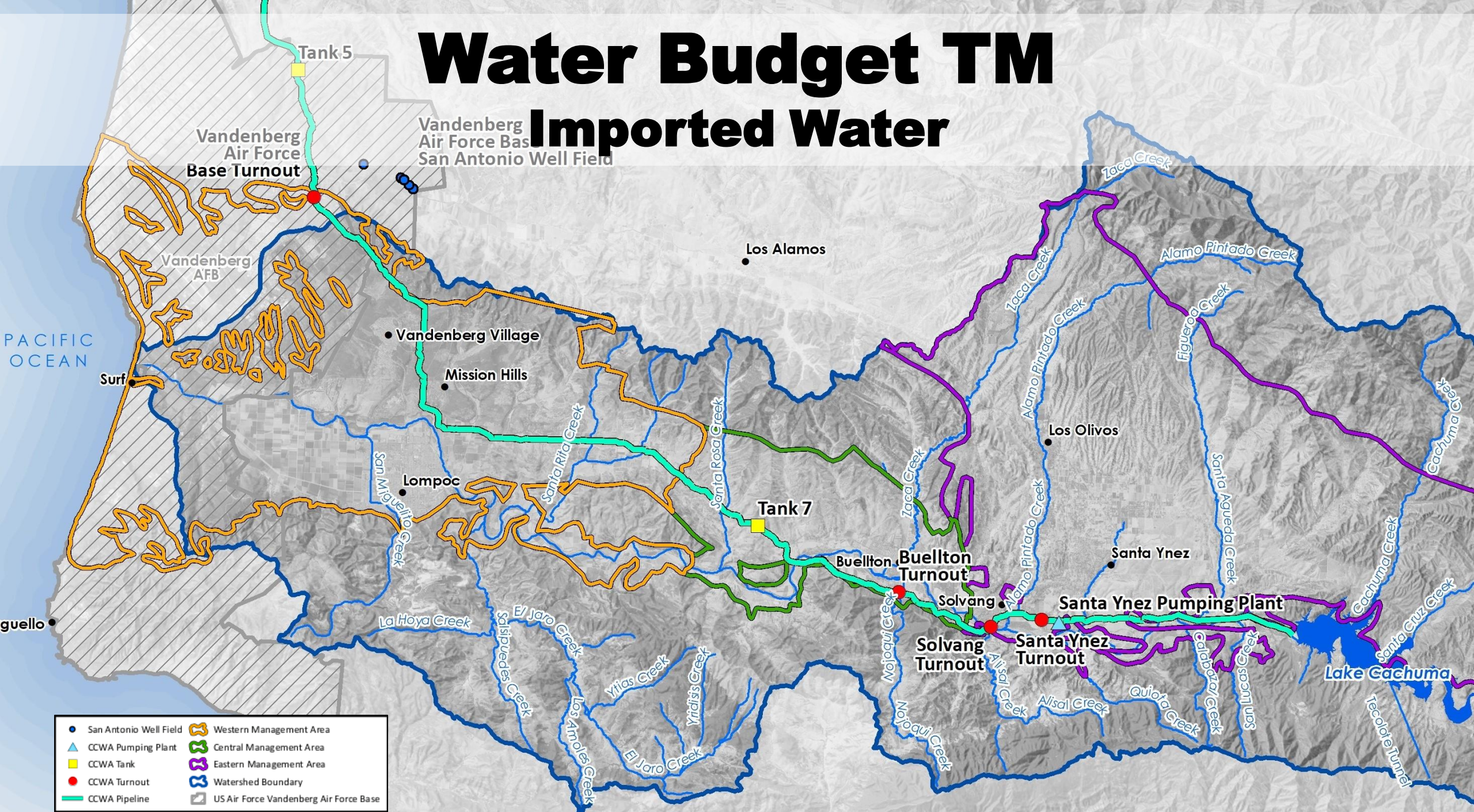
Watershed and Water Exports



Water deliveries to South County via Tecolote, Mission and Daulton Tunnels considered in water budget

Water Budget TM

Imported Water



- | | |
|--------------------------|--|
| ● San Antonio Well Field | Western Management Area |
| ▲ CCWA Pumping Plant | Central Management Area |
| ■ CCWA Tank | Eastern Management Area |
| ● CCWA Turnout | Watershed Boundary |
| — CCWA Pipeline | US Air Force Vandenberg Air Force Base |

Water Budget TM



DRAFT TECHNICAL MEMORANDUM

2171 E. Francisco Blvd., Suite K • San Rafael, California • 94901
TEL: (415) 457-0701 FAX: (415) 457-1638 e-mail: sr@stetsonengineers.com



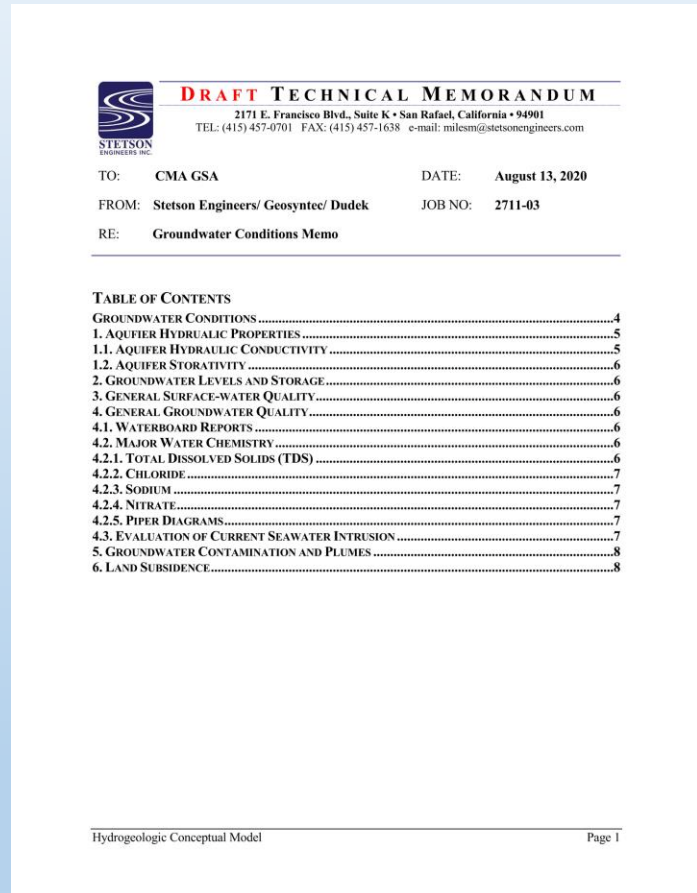
TO: WMA GSA DATE: August 13, 2020
FROM: Stetson Engineers/ Geosyntec/ Dudek JOB NO: 2710-03
RE: Hydrogeologic Conceptual Model (HCM)

TABLE OF CONTENTS

HYDROGEOLOGIC CONCEPTUAL MODEL	6
1. WESTERN MANAGEMENT AREA EXTENTS AND SUBAREAS	7
1.1. WMA BOUNDARIES	8
1.2. WMA SUBAREAS	8
1.2.1. SANTA YNEZ RIVER ALLUVIUM SUBAREA	9
1.2.2. LOMPOC PLAIN SUBAREA	9
1.2.3. BURTON MESA SUBAREA	9
1.2.4. LOMPOC UPLAND SUBAREA	10
1.2.5. SANTA RITA UPLAND SUBAREA	11
2. TOPOGRAPHY AND SURFACE WATER BODIES	11
2.1. DIRECT PRECIPITATION	12
2.1.1. SOILS AND INFILTRATION	12
2.2. RECHARGE AREAS	13
2.3. WATERSHED AND SIGNIFICANT SURFACE WATER BODIES	13
2.3.1. RIVERS AND STREAMS	14
2.3.2. PACIFIC OCEAN	15
A. LOMPOC PLAIN	15
B. BURTON MESA	16
C. LOMPOC TERRACE	16
2.3.3. WATER IMPORTS	16
2.3.4. WATER EXPORTS	17
2.3.5. TREATED WASTEWATER SOURCES	17
3. ADDITIONAL SURFACE WATER AND GROUNDWATER INTERACTIONS	18
3.1. PRIMARY USE OF GROUNDWATER	18
3.1.1. SANTA YNEZ RIVER ALLUVIUM SUBAREA	19
3.1.2. LOMPOC PLAIN SUBAREA	19
3.1.3. BURTON MESA SUBAREA	19
3.1.4. LOMPOC TERRACE SUBAREA	20
3.1.5. LOMPOC UPLAND SUBAREA	20
3.1.6. SANTA RITA UPLAND SUBAREA	20
3.2. AGRICULTURAL LANDS	21

- Plan to release DRAFT Water Budget TM to Staff in Sep
- Plan to release to GSA committee at Oct meeting
- Plan to workshop the information for the GSA, public and CAG

Groundwater Conditions TM



DRAFT document in progress, discusses:

- Principal aquifers and water levels
- Aquifer properties and storage
- Groundwater quality
- Surface water
- Seawater intrusion
- Land subsidence

**"description of current and historical groundwater conditions in the basin [...], based on the best available information"
23 CCR § 354.14(a)**

Groundwater Model

Conversion of FEMFLOW
model into modern MODFLOW-
USG of existing model:

- Node structure converted into MODFLOW-USGS
- Hydraulic properties converted over

Next Steps



Special GSA Meeting / Workshop in October to review DRAFT documents:

- Hydrogeologic Conceptual Model Technical Memo
- Water Budget Technical Memo

Regularly scheduled GSA Meeting / Workshop in November to review:

- Groundwater Conditions Technical Memo
- Groundwater Modeling Technical Memo

Groundwater modeling construction, calibration and simulations

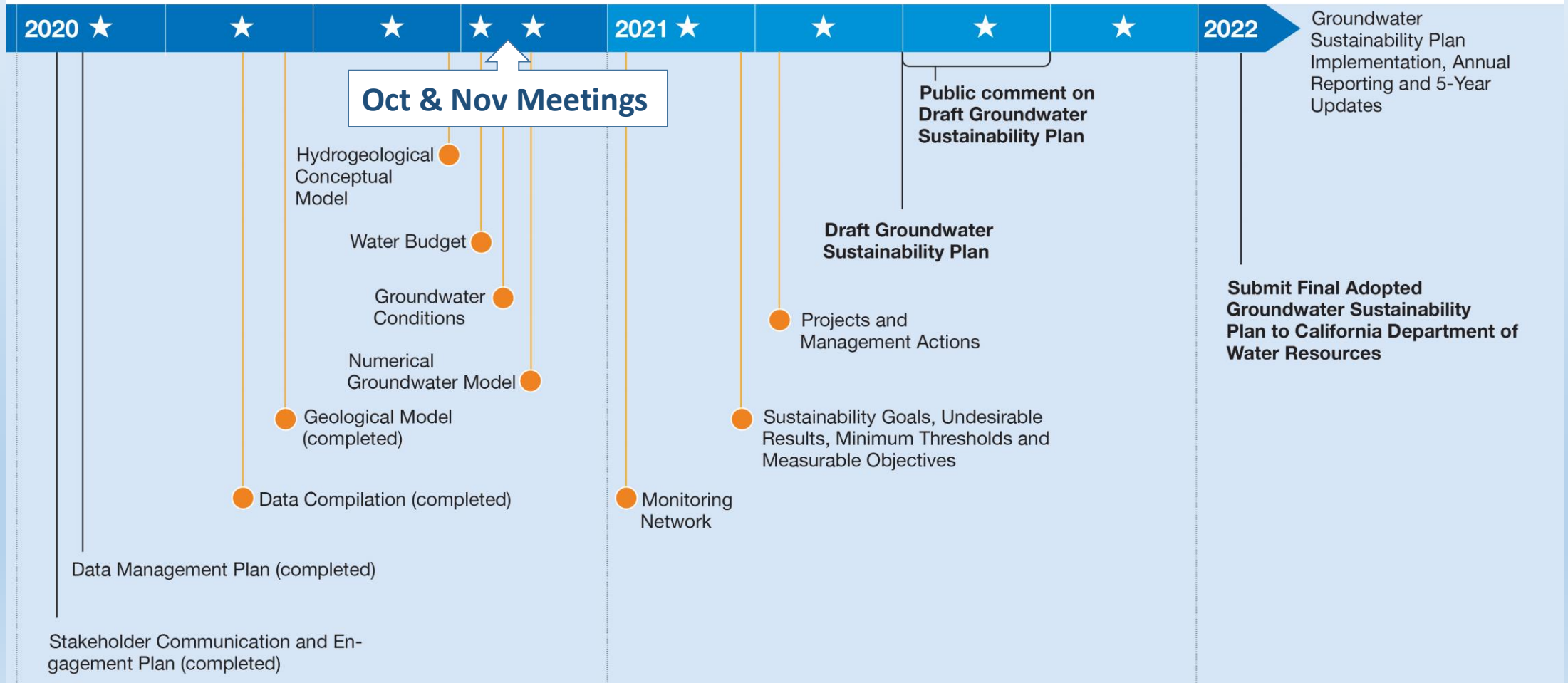


Stars denote items for public engagement and opportunities to review and provide comment

The Way Ahead

Groundwater Sustainability Plan Development Milestones

★ Groundwater Sustainability Agency Committee Public Meeting ● Technical Memorandum



Questions?